



24TH ANNUAL

PAHL
LIVESTOCK LTD.
HORNED HEREFORDS & BLACK-ANGUS

PRODUCTION SALE

Friday,

November 18, 2022

1:00pm at the Pahl Ranch



WELCOME...

2022 Bull Sale Opening Letter

Welcome to the 2022 group of bulls from The Pahl Family. Thank you to our customers and friends for your loyal support and for the confidence you've shown in our breeding program. We are so proud of this group and honoured that you would take the time to look through our catalog.

2022 was a bit of a Jekyll and Hyde year. Spring had the skies open up for most in Southern Alberta with some receiving up to 12-13 inches of rain, but when the tap turned off, boy did it ever! Not a drop since, and average temperatures over +35 for most of the summer which made for a bit of a challenging Fall. Throughout the summer we heard from fellow cattlemen at various rodeos and cattle functions, that many were struggling with dried up dugouts and had to bring cows home early from some grazing leases. Thankfully, that blow seemed lessened a bit with cull cow prices (and especially cull bull prices) at good levels.

As we put this catalog together, the cattle futures and coming calf market look promising, even more so for feeder heifers which have really taken a beating the last few years. That all being said, there's no better time to improve your bull battery than with Pahl genetics. Our innovative breeding program is consistently progressing, improving and refining. We feel our offering here is proof that our program is built to help cattle excel in the harsh environment we've just been talking about. "Your bulls just work," is a comment we just keep hearing over and over. From the cattlemen that sell right off the cow, to those that background and those that take cattle right to fats it keeps coming back to us that, "Your bulls just work!" A comment that comes from years of very strict management, because it seems the more time we put in, the less time we put in, the less time we have for mediocre cattle.

Thank you for taking the time from your day to look through the catalog. If you have any questions, or if we can be of any assistance in any way, please don't hesitate to call or stop in.

Our commitment and highest priority is the satisfaction and success of our customers.

We look forward to seeing you all on sale day!
The Pahl Family

PS If you have any questions about the sale offering, please don't hesitate to call Dan at 403-548-1614 or Scott at 403-580-9908.



THE PAHLS



Pahl Livestock

Horned Herefords & Black Angus

Box 245, Medicine Hat, AB, T1A 7E9

Dan Pahl: 403-548-1614 - Email: pahl livestock21@gmail.com

Scott Pahl: 403-548-2356 - Email: pahl.livestock@xplornet.com

LeRay Pahl: 403-548-6626

SALE DAY 403-548-2356

CATALOGUE AVAILABLE ONLINE AT

www.pahl-livestock.com

or on facebook & Instagram at pahl livestock

Special Thanks to our Great Sale Help

SALES REPRESENTATIVES

Ryan Dorran
Nate Marin
Craig Fleweling
Graham McLean
Myles Immerkar
Kelsey Knott
Nels Nixdorff
Micheal Latimer
Dave Callaway
Chris Poley

403-507-6483
403-869-7130
403-556-0515
CAA President
CAA - CEO
AAA President
CHA President
CHA Executive Director
Angus World
Angus Advantage

TERMS & CONDITIONS

TERMS: Terms of the sale are cash or cheque, payable at the sale location. Credit arrangements may be made with individual contributors prior to sale. The right of property shall not pass until after settlement has been made; no invoicing on buyers not in attendance, unless previous arrangements have been made. Every animal sells to the highest bidder and in case of disputes, the auctioneer's decision will be final. Announcements from the auction block will take precedence over the printed matter in the catalogue. Current exchange rates will be announced sale day. All monies are in Canadian funds.

TRANSFER OF OWNERSHIP: Proper instructions must be provided at the conclusion of the sale. Extensions granted on order bids only. Costs incurred due to incorrect transfer will be born by the purchaser. Ownership will not be transferred until full settlement has been made.

GUARANTEE: Each animal becomes the purchaser's risk immediately after the animal is sold. Females have been examined pregnant and considered breeders without any further guarantee.

LIABILITIES: All persons attend the sale at their own risk. The owners, their employees, sales staff and representatives, and facility owner assume no liability legal or otherwise, for any accidents that occur.

HEALTH: All sale cattle are on the Complete Herd Health Program and will be given Ivermectin prior to sale day.

DELIVERY: On Bulls: We will deliver free within a 300 mile radius on single purchases over \$4000.00. If you bring

your own trailer to the sale and pick up cattle we will refund \$100.00 on every purchase up to a maximum of \$300.00. Every assistance will be given in the arranging of shipping and delivery of your purchases. Each animal becomes the risk of the purchaser as soon as sold. All U.S. purchases will be delivered to our closest border crossing unless other arrangements are made with the consignors. **NO DELIVERY ON COMMERCIAL LOTS.**

SEMEN: Pahl Livestock reserves the right to collect semen from any bull sold through the sale. Any semen collected will be at Pahl's expense and buyers convenience. Any semen collected will be for Pahl Livestock use only.

WINTERING PROGRAM: AGAIN THIS YEAR - Bulls will be wintered free of charge until March 15, 2023. Bulls stored after that date will be charged \$2.00 per day. THIS WINTERING FEE MUST BE PAID UPON DELIVERY OR PICKUP. All bulls wintered MUST BE INSURED and WILL BE DELIVERED AFTER MARCH 15, AT PAHL LIVESTOCK'S CONVENIENCE.

INSURANCE:
Jon McKenzie - jon@dsinsuranceservices.ca
403-642-2032

AGAIN THIS YEAR - Bulls will be semen tested and full insurance is recommended.

Bulls will be semen tested by Bow Valley Vet Services

ERRORS: All announcements at sale time, written or oral, supercede any written material in the catalogue.

LUNCH: Join us for lunch prior to the sale.

Sight Unseen Purchase Plan

We have sold many bulls to people who were unfortunately unable to attend our sale. If for some reason you are unable to attend we would be happy to assist you with your selection and represent you on sale day. Please feel free to call any of the sale representatives to discuss your selections and discuss the offering, preferably a few days before the sale. We will Guarantee your Satisfaction!

Dan Pahl – (403-548-1614)
Scott Pahl – (403-580-9908)
Ryan Dorran – (403-507-6483)

Brett Thompson - (403-741-5050)
Nate Marin (306) 869-7130
Craig Fleweling 403-556-0515

Join us for Shauna's Famous Smoked Brisket
Sponsored by Western Tractor

SUPPORTING AGRICULTURE

Ask us about solutions to improve
the efficiency of your cattle operations.



Coby Schacher,
Account Manager
403-952-2652



Scott Hershmillier,
Territory Manager
403-866-2577



@westerntractor

westerntractor.ca



SHANE PENDER

403.502.2621

235 36 Street North
Lethbridge, AB Canada
T1H 5R8



CargillTM

Helping the world *thrive*

Tel: 403.329.4462
Fax: 403.329.4853

shane_pender@cargill.com
www.cargill.com/feed

Internet Bidding Available

D | L | M | S

www.dlms.ca

**For more information Call DLMS Reps:
Whitney Bosovich 780.991-3025
Mark Shologan 780.699.5082**

mhfc.ca

MHFC

MEDICINE HAT FEEDING CO.

AUCTION MARKET AND LIVESTOCK SUPPLY STORE

Phone: 403-526-3129 • Toll Free: 1-800-452-3129

Fax: 403-528-9355

Livestock Supply Store: 403-526-2707

PRESORT CALF SALES

Start time 10:00 am

Oct. 17 - Angus Pride Presort
19 - Vintage Angus Presort
21 - Angus/Hereford Heritage Presort
24 - Angus Advantage Presort
26 - Char/Gelv Presort
28 - Angus/Hereford Classic Presort
31 - Angus Cross Supreme Presort

Nov. 4 - Angus Masterpiece Presort
7 - Angus Influence Presort

REGULAR SALES
Every Wednesday @ 9:30

LIVESTOCK SUPPLY STORE

- Feed, Tack, Western Accessories & More!
- Dealers for Crystalyx, Stampede Steel,
& 2W Livestock Equipment

Questions Email: manager@mhfcstore.com

HEREFORD REFERENCE SIRES



PAHL 028X DAKAR 12D 22-Mar-16

Reference Sire

BW.	2.8
WW.	53.1
YW.	85.4
MILK. ...	38.7
T. MAT. .	65.3

UPS DOMINO 3027 {DLF HYF IEF MSUDF MDF}
CHURCHILL SENSATION 028X {DLF HYF IEF MDF}
 C03030331 CHURCHILL LADY 7202T ET {DLF HYF IEF}
 SNS 5S STANMORE 79Y {DLF HYF IEF MSUDF}
XTC 79Y MISS ERICA 158B
 BBSF 114L SILVER LASS 235X

Dakar has bred really well for us. His females are great and the bulls speak for themselves. A couple of herd bull prospects in the offering. 8 sons sell.
 BW 86lbs



ILK EXTRA MONEY ET 20E 02-Apr-17

Reference Sire

BW.	3.1
WW.	43.2
YW.	62.6
MILK. ...	24.9
T. MAT. .	46.5

ECR L18 EXTRA DEEP 9279 {DLF HYF IEF}
BR 9279 EXTRA DEEP 15Z {DLF HYF IEF}
 C03045135 DBHR 42R SILVER 102T {DLF HYF IEF}
 WB MONEYMAKER BEAR ET 2T {DLF HYF IEF}
WB KATIE MONEY 28Z {DLF HYF IEF MSUDF}
 WB KATIE 17P {DLF HYF IEF}

This will be Extra Money's last group to sell. Unfortunately we lost him just before breeding last season. He has definitely left his mark on our herd. He produced tremendous cattle as both cows and bulls. 9 sons sell.
 BW 92lbs



PAHL 38E GMC 9G 19-Mar-19

Reference Sire

BW.	3.1
WW.	49.1
YW.	74.4
MILK. ...	17.2
T. MAT. .	41.8

LRD EASY LAD 23B {DLF HYF IEF}
LRD 23B EASY LAD 38E {DLF HYF IEF}
 C03066611 LRD 902 LADY 27Y
 LRD EASY LAD 23B {DLF HYF IEF}
LRD EASY LADY 41E
 LRD LADY RAMBO 10W

GMC bred awesome! Used exclusively on our heifers, his progeny have done nothing but impress us. Not very often you have 4 sons in a sale out of your first calf heifers. 4 sons sell.
 BW 76

Raising Bulls at Pahl Livestock

Bulls here are raised strictly with natural growth and longevity in mind. Lots of bulls are fed in large pens but ours are fed in an approximately 50 acre pen with the feed and the water as far apart as they can be, forcing the bulls to walk miles a day. They are fed a textured grain ration designed for skeletal growth and development, as well as a custom mineral to help with fertility, and free choice dry hay. The whole sale group is fed in two pens letting the better bulls rise to the top. Bulls are then sorted and the bottom is culled after each weigh date and again in September before the sale for temperament. There are no bulls sold from this pen before the sale. These bulls are raised to be sound and guaranteed breeders.

ANGUS REFERENCE SIRES



7005



PRAIRIE PRIDE ORIGINAL 7005 19-Feb-17

SYDGEN 928 DESTINATION 5420

PRAIRIE PRIDE NEXT STEP 2036

2096128

FLYING V MISS PRIDE 426

HOOVER DAM

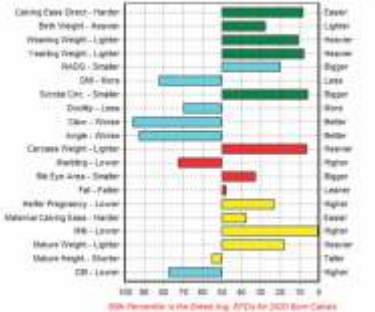
PRAIRIE PRIDE EILEEN 1032

PRAIRIE PRIDE 205 EILEEN 509

Reference Sire

BW 1.1
 WW 62.0
 YW 115.0
 SC 1.49
 MB 0.23
 REA 0.54
 FAT +0.014
 MILK 34.0

EPD Percentiles for PRAIRIE PRIDE ORIGINAL 7005
 Released September 2021 Black Angus



6442



BROOKS PAYWEIGHT 6442 12-Mar-16

BASIN PAYWEIGHT 006S

BASIN PAYWEIGHT 1682

1986174

21AR O LASS 7017

SITZ UPWARD 307R

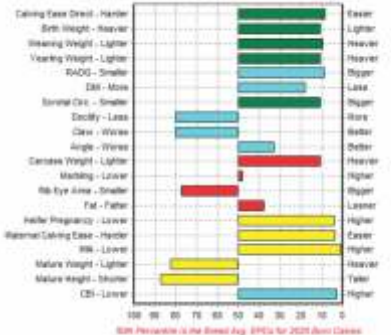
RUBY 2466 BCBR

RUBY 7816 BCBR

Reference Sire

BW -0.1
 WW 64.0
 YW 111.0
 SC 1.30
 MB 0.37
 REA 0.32
 FAT +0.007
 MILK 34.0

EPD Percentiles for BROOKS PAYWEIGHT 6442
 Released September 2021 Black Angus





PAHL NEXT STEP 101J 11-Mar-21

P101J

PRAIRIE PRIDE NEXT STEP 2036 US17367599
PRAIRIE PRIDE ORIGINAL 7005 2096128
 2200604 PRAIRIE PRIDE EILEEN 1032 US17767087
 SA V HESSTON 2217 1865486
PAHL BEAUTY 133D 1953464
 SOO LINE BEAUTY 9041 1504921

PERFORMANCE	90	765	1400				
	BW	WW	YW	DOC	CW	MRB	REA
EPD'S	+2.1	+52	+98	+15	+47	+0.22	+0.71

ANGUS



Dam
PAHL 133D



PAHL LIVESTOCK
P101J



PAHL NEXT STEP 105J 14-Mar-21

P105J

PRAIRIE PRIDE NEXT STEP 2036 US17367599
PRAIRIE PRIDE ORIGINAL 7005 2096128
 2200613 PRAIRIE PRIDE EILEEN 1032 US17767087
 PEAK DOT IRON MOUNTAIN 457Y 1635217
PAHL LOOKER 110B 1812834
 PAHL LOOKER 236X 1563054

PERFORMANCE	84	705	1330				
	BW	WW	YW	DOC	CW	MRB	REA
EPD'S	+0.1	+53	+101	+18	+32	+0.69	+0.35

ANGUS



Maternal Brother
165H to M&R Damen



PAHL LIVESTOCK
P105J



PAHL CASH 107J 15-Mar-21

P107J

KR CASH FLOW 1788448
ARDA CASH FLOW 63D 1941255
 2214684 ARDA BEAUTY 184U 1594393
 PAHL DARK SHADOW 208T 1475205
PAHL MISS EMULOUS 229X 1563048
 PAHL MISS EMULOUS 161U 1453759

PERFORMANCE	90	615	1320				
	BW	WW	YW	DOC	CW	MRB	REA
EPD'S	+3.3	+56	+99	+21	+44	+0.11	+0.92

ANGUS



Maternal Brother
192G to East & West Ranch



PAHL LIVESTOCK
P107J



PAHL LIGHTNING STRIKE 108J 15-Mar-21

P108J

HOOVER NO DOUBT 1836419
BALDRIDGE PAPPY 2081058
 2223944 BALDRIDGE ISABEL B061 US18060653
 BARSTOW CASH 1881900 DDF
PAHL 070 BLACKCAP 148F 2071693
 MCATL BLACKCAP 070-4132 1869634

PERFORMANCE	88	738	1280				
	BW	WW	YW	DOC	CW	MRB	REA
EPD'S	+1.0	+71	+124	+22	+61	+0.31	+0.42

ANGUS



Granddam
MCATL 070



PAHL LIVESTOCK
P108J



Dam
PAHL LADY 161A



Maternal Brother
124G to M&R Damen



Sire
ARDA CASH FLOW



Maternal Grand Dam
LADY OF PEAK DOT 278M

PAHL CASH 109J 15-Mar-21

KR CASH FLOW 1788448
ARDA CASH FLOW 63D 1941255
 2214686 ARDA BEAUTY 184U 1594393
 BELVIN WARRIOR 6'09 1497960
PAHL LADY OF PEAK DOT 161A 1734921
 LADY OF PEAK DOT 278M 1100464

PERFORMANCE	90	797	1410				
	BW	WW	YW	DOC	CW	MRB	REA
EPD'S	+5.4	+60	+114	+17	+49	+0.59	+0.58



Paternal Grand Sire
KR CASH FLOW



Dam PAHL 227Z

PAHL 112J - ARDA Cash Flow has worked very well for us over the years. The sons have been extremely well received, being thick and fleshy, very soft made with a nice foot. The 112J bull is no exception he is thick, rugged and all bull. The Tibbie cow comes from a cow I bought from Remital to go right into the donor pen. The 172P cow was one of the top cows around at that time in my opinion, and 227Z carries all the same qualities.



PAHL CASH 112J 17-Mar-21

PERFORMANCE	92	740	1350				
	BW	WW	YW	DOC	CW	MRB	REA
EPD'S	+3.9	+61	+112	+18	+42	+0.25	+0.25



KR CASH FLOW 1788448
ARDA CASH FLOW 63D 1941255
 2214690 ARDA BEAUTY 184U 1594393
 PAHL DARK SHADOW 208T 1475205
PAHL TIBBIE 227Z 1684730
 REMITAL TIBBIE 172P 1227318



Maternal Great Grand Dam
BELVIN LADY BLOSSOM 22'02



Dam
PAHL 116A

PAHL 113J - I've been harping on this Cash X Warrior cross for years because it works. The 113J bull and the 115J bulls are full brothers with the dams being full sisters. The two bulls are peas in a pod, both super thick, big nuts and have great feet. Both sale features and will work for anyone. The 116A cow's son last year went to Stewart Crone of Crone Herefords.



PAHL
LIVESTOCK
P113J

PAHL CASH 113J 18-Mar-21

KR CASH FLOW 1788448
ARDA CASH FLOW 63D 1941255
 2214691 ARDA BEAUTY 184U 1594393
 BELVIN WARRIOR 6'09 1497960
PAHL ERICA KAY 116A 1734882
 PAHL ERICA KAY 177U 1460968

PERFORMANCE	96	676	1340				
	BW	WW	YW	DOC	CW	MRB	REA
EPD'S	+4.9	+53	+107	+21	+41	+0.43	+0.55



PAHL
LIVESTOCK
P114J

PAHL PAYWEIGHT 114J 18-Mar-21

BASIN PAYWEIGHT 1682 2010588
BROOKS PAYWEIGHT 6442 1986174 OHF
 2214692 RUBY 2466 BCBR US17320514
 PAHL SOLAR ECLIPSE 157Z 1706198
PAHL GEORGINA 104B 1812703
 PAHL GEORGINA 154Z 1684668

PERFORMANCE	80	803	1440				
	BW	WW	YW	DOC	CW	MRB	REA
EPD'S	+0.0	+67	+117	+16	+51	+0.49	+0.44





PAHL CASH 115J 18-Mar-21

KR CASH FLOW 1788448
ARDA CASH FLOW 63D 1941255
 2166180 ARDA BEAUTY 184U 1594393
 BELVIN WARRIOR 6'09 1497960
PAHL ERICA KAY 186B 1812756
 PAHL ERICA KAY 177U 1460968



**Maternal Great Grand Dam
PAHL 57N**



**Dam
PAHL 186B**

PAHL115J - This is a good rip and a full brother to the 113J bull. The 186B cow as well as the 116A cow are solid brood cows. The type you would want to influence your whole herd, sound, round and low to the ground. These bulls have wonderful coats of hair, close to perfect feet and massive depth and thickness.

PERFORMANCE

90	830	1360				
BW	WW	YW	DOC	CW	MRB	REA
+3.0	+59	+105	+15	+50	+0.28	+0.40

EPD'S



PAHL PAYWEIGHT 116J 18-Mar-21

BASIN PAYWEIGHT 1682 2010588
BROOKS PAYWEIGHT 6442 1986174 OHF
 2214694 RUBY 2466 BCBR US17320514
 PAHL SOLAR ECLIPSE 157Z 1706198
PAHL LADY HEATHER 237C 1859361
 PAHL LADY HEATHER 138R 1285928

PERFORMANCE

78	802	1330				
BW	WW	YW	DOC	CW	MRB	REA
-2.0	+49	+89	+24	+29	+0.34	+0.39

EPD'S



PAHL POWERBALL 117J 19-Mar-21

BSF HOT LOTTO 1401 1879579
PAHL POWERBALL 157F 2071692
 2214695 MCATL BLACKCAP 070-4132 1869634
 BROOKS PAYWEIGHT 6442 1986174
PAHL EMPRESS 141F 2054232
 PAHL EMPRESS 142D 1933122

PERFORMANCE

88	825	1480				
BW	WW	YW	DOC	CW	MRB	REA
+3.2	+78	+121	+23	+63	-0.06	+0.59

EPD'S





PAHL CASH 120J 20-Mar-21

P120J

KR CASH FLOW 1788448
ARDA CASH FLOW 63D 1941255
 2214697 ARDA BEAUTY 184U 1594393
 BELVIN WARRIOR 6'09 1497960
PAHL LUCILLE 210A 1734962
 PAHL LUCILLE 22R 1285915

PERFORMANCE	96	785	1425				
	BW	WW	YW	DOC	CW	MRB	REA
EPD'S	+6.7	+60	+109	+17	+58	+0.33	+0.69



Maternal Brother
 125H \$11,000 to
 Highland Stock Farms



PAHL Livestock
P120J

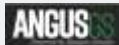


PAHL CASH 124J 22-Mar-21

P124J

KR CASH FLOW 1788448
ARDA CASH FLOW 63D 1941255
 2214698 ARDA BEAUTY 184U 1594393
 BELVIN WARRIOR 6'09 1497960
PAHL GLENELLA 139C 1859271
 PAHL GLENELLA 134Y 1613925

PERFORMANCE	96	775	1460				
	BW	WW	YW	DOC	CW	MRB	REA
EPD'S	+4.0	+64	+116	+7	+64	+0.29	+0.82



PAHL Livestock
P124J



PAHL TOP SHELF 130J 22-Mar-21

P130J

BSF HOT LOTTO 1401 1879579
PAHL POWERBALL 157F 2071692
 2223946 MCATL BLACKCAP 070-4132
 HF TIGER 5T 1402252
PAHL QUEEN 152Y 1611510
 PAHL QUEEN 178T 1391948

PERFORMANCE	82	700	1230				
	BW	WW	YW	DOC	CW	MRB	REA
EPD'S	+1.3	+47	+77	+17	+41	+0.45	-0.01



PAHL Livestock
P130J



PAHL NEXT STEP 136J 22-Mar-21

P136J

PRAIRIE PRIDE NEXT STEP 2036 US17367599
PRAIRIE PRIDE ORIGINAL 7005 2096128
 2214715 PRAIRIE PRIDE EILEEN 1032 US17767087
 ARDA CASH FLOW 63D 1941255
PAHL GEORGINA 110F 2054206
 PAHL GEORGINA 107C 1859243

PERFORMANCE	88	741	1290				
	BW	WW	YW	DOC	CW	MRB	REA
EPD'S	+3.4	+67	+120	+10	+72	+0.29	+0.83



PAHL Livestock
P136J



Maternal Brother
181G to East & West Ranch



Dam
PAHL 206B

PAHL 138J - The Prairie Pride bull was a bull I purchased looking for something a bit different and he did not disappoint. The daughters seem to be turning into good solid cows and the whole group are the best footed cattle around. The 206B cow, a daughter of the Iron Mountain bull that has been a top cow for years. Her son last year went to East and West Ranching.

PERFORMANCE	88	660	1340				
	BW	WW	YW	DOC	CW	MRB	REA
EPD'S	+0.8	+50	+92	+4	+32	+0.02	+0.53



PAHL NEXT STEP 138J 22-Mar-21

PRAIRIE PRIDE NEXT STEP 2036 US17367599
PRAIRIE PRIDE ORIGINAL 7005 2096128
 2214717 PRAIRIE PRIDE EILEEN 1032 US17767087
 PEAK DOT IRON MOUNTAIN 457Y 1635217
PAHL MISS INA 206B 1812807
 PAHL MISS INA 170X 1594002



Sire
KR INCREDIBLE 8149



Dam
MERIT FLORA 6078D



Maternal Grand Sire
BAR S RANGE BOSS



Flush Brother
Jr Calf Champion
Agribition 2021
MERIT INCREDIBLE 1020

PERFORMANCE	90	778	1540				
	BW	WW	YW	DOC	CW	MRB	REA
EPD'S	+3.1	+76	+134	+20	+53	-0.04	+0.69



PAHL DOUBLE BARREL 142J 23-Mar-21

PANTHER CR INCREDIBLE 6704 2016371
KR INCREDIBLE 8149 2144016
 2236342 KR PRIDE 4031 US17944111
 BAR S RANGE BOSS 4002 1881898
MERIT FLORA 6078D 1934698
 MERIT FLORA 4120 1796474



Sire
MOGCK ENTICE



Dam
LIMESTONE RITA 354X



Maternal Brother
104C Ost Cattle



Maternal Brother
123F \$20000 to Arda Farms

PERFORMANCE	88	700	1375				
	BW	WW	YW	DOC	CW	MRB	REA
EPD'S	+2.1	+59	+115	+26	+41	+0.73	+0.37



PAHL TRAIN STATION 145J 24-Mar-21

SYDGEN ENHANCE 2028564
MOGCK ENTICE 2077758
 2233774 MOGCK ERICA 2255 US18334720
 LIMESTONE DARKHORSE U322 1524690
LIMESTONE RITA X354 1609506
 A PLUS RITA 8050 US13221554



PAHL SILVER LINING 146J 24-Mar-21

BSF HOT LOTTO 1401 1879579
PAHL POWERBALL 157F 2071692
 2214739 MCATL BLACKCAP 070-4132 1869634
 HF SYNDICATE 65B 1799233
BELVIN LADY BLOSSOM 192'18 2039609
 BELVIN LADY BLOSSOM 145'14 1785658

PERFORMANCE	96	720	1420				
	BW	WW	YW	DOC	CW	MRB	REA
EPD'S	+4.5	+67	+121	+12	+62	+0.15	+0.38





PAHL ROLLIN THUNDER 147J 24-Mar-21

HOOVER NO DOUBT 1836419
BALDRIDGE PAPPY 2081058
 2223948 BALDRIDGE ISABEL B061 US18060653
 MOHNEN SOUTH DAKOTA 402 1727672
BELVIN LADY BLOSSOM 41'16 1941700
 BELVIN LADY BLOSSOM 91'11 1612968



Dam
BELVIN LADY BLOSSOM 41D



Sire
BALDRIDGE PAPPY

PAHL 147J - The first of the Baldrige Pappy son's in the sale. The Pappy genetics will be exclusive to Pahl Livestock in Canada. Pappy came from the record setting flush at Baldrige Angus between Hoover No Doubt and Baldrige Isabel B061. The Lady Blossom 41D cow came from Belvin a few years back as my pick of the bred heifers to sell that day. She has been a cow that always catches your eye.

PERFORMANCE	86	710	1370				
	BW	WW	YW	DOC	CW	MRB	REA
EPD'S	+1.2	+55	+100	+12	+37	+0.82	+0.65



PAHL PAYWEIGHT 148J 24-Mar-21

BASIN PAYWEIGHT 1682 2010588
BROOKS PAYWEIGHT 6442 1986174
 2214740 RUBY 2466 BCBR US17320514
 CONNEALY EARNAN 076E 1767036
RIVERBEND BLACKLADY MCB 36'16 1941845
 BLACKLADY MCB 16'2011 1619567

PERFORMANCE	82	750	1450				
	BW	WW	YW	DOC	CW	MRB	REA
EPD'S	+2.8	+76	+132	+6	+64	+0.39	+0.30



PAHL CASH 150J 25-Mar-21

KR CASH FLOW 1788448
ARDA CASH FLOW 63D 1941255
 2214744 ARDA BEAUTY 184U 1594393
 BELVIN WARRIOR 6'09 1497960
PAHL ERICA KAY 238A 1734984
 PAHL ERICA KAY 57N 1181603

PERFORMANCE	90	750	1300				
	BW	WW	YW	DOC	CW	MRB	REA
EPD'S	+2.2	+33	+64	+18	+15	+0.68	+0.01



HOW MUCH CAN YOU AFFORD TO PAY FOR A TOP BULL?

COWMAN FORMULA

Increase in pounds per calf from a top-performance bull
 X No. of cows bred to him per year
 X No. of years to keep the bull
 X Expected selling price of calves
 = Additional dollars you can pay for a better bull

Example: A bull who will add 30 lbs. to the weaning weight of each of his calves mated to 25 cows per year for 4 years and you sell the calves for \$1.80 per pound.

$30 \times 25 = 750 \times 4 = 3000 \times 1.80 = \$5,400$

This is worth \$5,400 more than the average bull who will keep your weaning weights the same. Take this formula and put our own figures in and see what you can afford to pay. This equation does not consider the increase in value due to calving-ease, higher quality replacement heifers, yearling growth, feedlot gain and improved carcass quality.



PAHL NEXT STEP 151J 25-Mar-21

PRAIRIE PRIDE NEXT STEP 2036 US17367599
PRAIRIE PRIDE ORIGINAL 7005 2096128
 2214746 PRAIRIE PRIDE EILEEN 1032 US17767087
 PAHL DARE 2 DREAM 172T 1411631
PAHL ERICA KAY 231X 1563050
 PAHL ERICA KAY 57N 1181603

PERFORMANCE	84	735	1330				
	BW	WW	YW	DOC	CW	MRB	REA
EPD'S	+2.5	+45	+84	+9	+35	+0.26	+0.39



Sire
BALDRIGE PAPPY



Dam
PAHL 135D

PAHL 153J - Livin' Large will definitely command some attention on sale day. He's a another son of the Pappy bull that you will only find here at Pahl Livestock. The Isabel B061 cow, a daughter of Isabel Y69 who could be one of the most recognized cows on the planet. The 135D cow is a very moderate brood cow that traces back to HF Tiger 5T on the top and KG Power Design on the bottom.



PAHL LIVIN LARGE 153J 26-Mar-21

HOOVER NO DOUBT 1836419
BALDRIDGE PAPPY 2081058
 2223949 BALDRIDGE ISABEL B061 US18060653
 PAHL OPENING NIGHT 206A 1753178
PAHL EMPRESS 135D 1933116
 PAHL EMPRESS 105U 1453713

PERFORMANCE	88	854	1450				
	BW	WW	YW	DOC	CW	MRB	REA
EPD'S	+1.9	+57	+96	+26	+46	+1.08	+0.48





PAHL MAD MONEY 156J 26-Mar-21

P156J

HOOVER NO DOUBT 1836419

BALDRIDGE PAPPY 2081058

2223951

BALDRIDGE ISABEL B061 US18060653

PAHL OPENING NIGHT 206A 1753178

PAHL MADISON 134E 1992336

PAHL MADISON 162A 1734922

PERFORMANCE	86	810	1375				
	BW	WW	YW	DOC	CW	MRB	REA
EPD'S	-1.2	+57	+107	+24	+64	+0.78	+0.77



PAHL LIVESTOCK
P156J



PAHL PAYWEIGHT 158J 26-Mar-21

P158J

BASIN PAYWEIGHT 1682 2010588

BROOKS PAYWEIGHT 6442 1986174

2214755

RUBY 2466 BCBR US17320514

PAHL SOLAR ECLIPSE 157Z 1706198

PAHL NORMA 131D 1933114

PAHL NORMA 118Y 1611488

PERFORMANCE	90	752	1260				
	BW	WW	YW	DOC	CW	MRB	REA
EPD'S	+1.8	+52	+86	+4	+30	+0.64	+0.16



PAHL LIVESTOCK
P158J



Dam
PAHL 163C



Sire
BROOKS PAYWEIGHT 6442

PAHL 159J - Payweight 159J is a bull with massive volume and depth of rib who's calves should really push down the scale. With a +1.0 calving EPD, calving season should be no problem as well. The 163C cow has quietly revealed herself as one of our top producers. She's a cow with a nice foot and a beautiful udder. Her past son's have all been sale features. One going to 7R Ranch in North Battleford and the one before that to East and West Ranching.



PAHL LIVESTOCK
P159J

PERFORMANCE	88	815	1510				
	BW	WW	YW	DOC	CW	MRB	REA
EPD'S	+1.0	+67	+122	+25	+48	+0.27	+0.33



PAHL PAYWEIGHT 159J 26-Mar-21

BASIN PAYWEIGHT 1682 2010588

BROOKS PAYWEIGHT 6442 1986174

2214759

RUBY 2466 BCBR US17320514

PAHL SOLAR ECLIPSE 157Z 1706198

PAHL ANNIE K 163C 1859293

PAHL 611 ANNIE K 109X 1593984



PAHL BEST IN SHOW 160J 26-Mar-21

P160J

HOOVER NO DOUBT 1836419
BALDRIDGE PAPPY 2081058
 2223952 BALDRIDGE ISABEL B061 US18060653
 SASKALTA WINSTON 64T 1420918
RANCHERS CHOICE PRINCESS 542X 1567027
 SASKALTA PRINCESS 506U 1458892

PERFORMANCE	88	685	1315				
	BW	WW	YW	DOC	CW	MRB	REA
EPD'S	+2.1	+47	+93	+12	+32	+0.81	+0.32

ANGUS



PAHL PAYWEIGHT 161J 26-Mar-21

P161J

BASIN PAYWEIGHT 1682 2010588
BROOKS PAYWEIGHT 6442 1986174
 2214783 RUBY 2466 BCBR US17320514
 PAHL SOLAR ECLIPSE 157Z 1706198
PAHL FLORA 158E 1992358
 PAHL FLORA 132Z 1684649

PERFORMANCE	82	620	1190				
	BW	WW	YW	DOC	CW	MRB	REA
EPD'S	-0.6	+44	+74	+13	+21	+0.29	+0.24



ANGUS



PAHL PAYWEIGHT 164J 28-Mar-21

P164J

BASIN PAYWEIGHT 1682 2010588
BROOKS PAYWEIGHT 6442 1986174
 2214805 RUBY 2466 BCBR US17320514
 PAHL BADA BOOM 167U 1453765
PAHL MISS INA 170X 1594002
 PAHL MISS INA 60N 1181635

PERFORMANCE	80	700	1300				
	BW	WW	YW	DOC	CW	MRB	REA
EPD'S	+0.0	+54	+79	+14	+30	+0.35	+0.20



ANGUS



PAHL CASANOVA 165J 28-Mar-21

P165J

PRAIRIE PRIDE NEXT STEP 2036
PRAIRIE PRIDE ORIGINAL 7005 2096128
 2214808 PRAIRIE PRIDE EILEEN 1032 US17767087
 PEAK DOT IRON MOUNTAIN 457Y 1635217
PAHL JESTRESS 116D 1933101
 PAHL JESTRESS 154Y 1613931

PERFORMANCE	92	769	1330				
	BW	WW	YW	DOC	CW	MRB	REA
EPD'S	+4.4	+63	+119	+12	+53	+0.13	+0.53

ANGUS





PAHL PAYWEIGHT 166J 28-Mar-21

P166J

BASIN PAYWEIGHT 1682 2010588

BROOKS PAYWEIGHT 6442 1986174

2214810 RUBY 2466 BCBR US17320514

HF WEISER 25C 1843965

PAHL JESTRESS 133E 1992335

PAHL JESTRESS 264C 1859385

PERFORMANCE	88	740	1320				
	BW	WW	YW	DOC	CW	MRB	REA
EPD'S	+1.3	+55	+95	+14	+28	+0.18	+0.31



PAHL Livestock
P166J



PAHL CASH 168J 28-Mar-21

P168J

KR CASH FLOW 1788448

ARDA CASH FLOW 63D 1941255

519415 ARDA BEAUTY 184U 1594393

BELVIN WARRIOR 6'09 1497960

PAHL ERICA 193B 1812759

GBT ERICA 40R 1267568

PERFORMANCE	82	740	1290				
	BW	WW	YW	DOC	CW	MRB	REA
EPD'S							



PAHL Livestock
P168J



PAHL Livestock
P176J

PAHL BOTTLE ROCKET 176J 30-Mar-21

HOOVER NO DOUBT 1836419

BALDRIDGE PAPPY 2081058

BALDRIDGE ISABEL B061

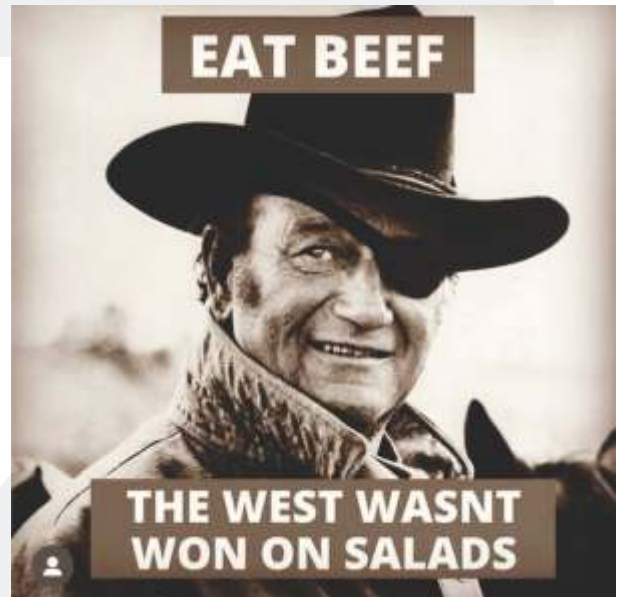
HF TIGER 5T 1402252

PAHL 2466 EMPRESS 145Y 1611506

PAHL 2466 EMPRESS 127W 1518646

PERFORMANCE	86	686	1400				
	BW	WW	YW	DOC	CW	MRB	REA
EPD'S							

PUREBRED NO PAPERS





**Maternal Granddam
PAHL 200U**



**Dam
PAHL 129Y**



**Maternal Brother
127E \$11500 to
Short Grass Ranch**



**Maternal Brother
109D \$14000 to
Cameron Farms**

PERFORMANCE	86	760	1470				
	BW	WW	YW	DOC	CW	MRB	REA
EPD'S	+2.7	+68	+136	+26	+69	+0.65	+0.65



**PAHL
LIVESTOCK**
P180J

PAHL POCKET ACES 180J 31-Mar-21

HOOVER NO DOUBT 1836419

BALDRIDGE PAPPY 2081058

2223956 BALDRIDGE ISABEL B061 US18060653

HF TIGER 5T 1402252

PAHL LADY HEATHER 129Y 1611497

PAHL LADY HEATHER 200U 1474836



**Maternal Granddam
MCATL 070**



**Dam
PAHL 253E**

PAHL 181J - Throw Down 181J should be a sale favourite with the phenotype and the genotype to go along with it. As I've mentioned the Baldrige Pappy genetics will only be found in Canada at Pahl Livestock. Pappy was purchased by Alta Genetics as part of the record setting flush at Baldrige Angus between Hoover No Doubt and a daughter of Y69 who could be one of the most productive cows in the world. Throw Down is a bull with a real showy look to him with also being very soft made and loose hided. His maternal brother went to Bar Diamond last year.

PERFORMANCE	82	705	1340				
	BW	WW	YW	DOC	CW	MRB	REA
EPD'S	+1.0	+69	+117	+21	+45	+0.75	+0.70



**PAHL
LIVESTOCK**
P181J

PAHL THROW DOWN 181J 31-Mar-21

HOOVER NO DOUBT 1836419

BALDRIDGE PAPPY 2081058

2223958 BALDRIDGE ISABEL B061 US18060653

BARSTOW CASH 1881900

PAHL 070 BLACKCAP 253E 1999561

MCATL BLACKCAP 070-4132 1869634





P183J

PAHL PAYWEIGHT 183J 01-Apr-21

BASIN PAYWEIGHT 1682 2010588
BROOKS PAYWEIGHT 6442 1986174
2214856 RUBY 2466 BCBR US17320514
HF WEISER 25C 1843965
PAHL 25E TIBBIE 189E 1992383
PAHL 25E TIBBIE 112C 1859359



PERFORMANCE	76	670	1230				
	BW	WW	YW	DOC	CW	MRB	REA
EPD'S	+0.8	+56	+94	-1.0	+37	+0.50	+0.44



P183J



P186J

PAHL CASH 186J 02-Apr-21

KR CASH FLOW 1788448
ARDA CASH FLOW 63D 1941255
2214859 ARDA BEAUTY 184U 1594393
BELVIN WARRIOR 6'09 1497960
PAHL JESTRESS 264C 1859385
PAHL JESTRESS 154Y 1613931

PERFORMANCE	90	705	1280				
	BW	WW	YW	DOC	CW	MRB	REA
EPD'S	+4.1	+61	+109	+17	+50	+0.46	+0.32



P186J



Dam
PAHL 264C



P187J

PAHL POWERBALL 187J 02-Apr-21

BSF HOT LOTTO 1401 1879579
PAHL POWERBALL 130G 2134038
2214861 MCATL BLACKCAP 070-4132 1869634
BRUNS BLASTER 1887308
PAHL LOOKER 126G 2117387
PAHL LOOKER 215Z 1701519

PERFORMANCE	92	720	1500				
	BW	WW	YW	DOC	CW	MRB	REA
EPD'S	+4.4	+85	+160	+25	+86	+0.09	+0.65



P187J



P188J

PAHL POWERBALL 188J 02-Apr-21

BSF HOT LOTTO 1401 1879579
PAHL POWERBALL 130G 2134038
2214864 MCATL BLACKCAP 070-4132 1869634
PRAIRIE PRIDE ORIGINAL 7005 2096128
PAHL KARMA 100G 2106681
PAHL KARMA 111C 1859246

PERFORMANCE	82	722	1390				
	BW	WW	YW	DOC	CW	MRB	REA
EPD'S	+0.9	+69	+129	+10	+62	+0.35	+0.44



P188J



PAHL CASH 189J 02-Apr-21

P189J

KR CASH FLOW 1788448
ARDA CASH FLOW 63D 1941255
 2214866 ARDA BEAUTY 184U 1594393
 BELVIN WARRIOR 6'09 1497960
PAHL BLACKBIRD 188B 1812758
 HENDERSON BLACKBIRD 48'04 1213238

PERFORMANCE	90	724	1340				
	BW	WW	YW	DOC	CW	MRB	REA
EPD'S	+3.1	+54	+96	+12	+42	+0.30	+0.61



PAHL Livestock
P189J



PAHL POWERBALL 190J 02-Apr-21

P190J

BSF HOT LOTTO 1401 1879579
PAHL POWERBALL 130G 2134038
 2214867 MCATL BLACKCAP 070-4132 1869634
 HF WEISER 25C 1843965
PAHL MISS ELEGENCE 131G 2128837
 PAHL MISS ELEGENCE 141W 1518657

PERFORMANCE	70	610	1090				
	BW	WW	YW	DOC	CW	MRB	REA
EPD'S	+0.9	+48	+91	+22	+39	+0.02	+0.42



PAHL Livestock
P190J



“Beautiful people are not always good, but good people are always beautiful.”



PAHL Livestock
P191J

PAHL PAYWEIGHT 191J 02-Apr-21

BASIN PAYWEIGHT 1682 2010588
BROOKS PAYWEIGHT 6442 1986174 OHF
 2214869 RUBY 2466 BCBR US17320514
 EDWARDS PIONEER 277B 1776096
WATSON WREN 668D 1952004
 WATSON LADY WREN 185R 1713961

PERFORMANCE	90	745	1350				
	BW	WW	YW	DOC	CW	MRB	REA
EPD'S	+2.3	+54	+97	+17	+49	+0.29	+0.25





Your Partner in Forage Supply



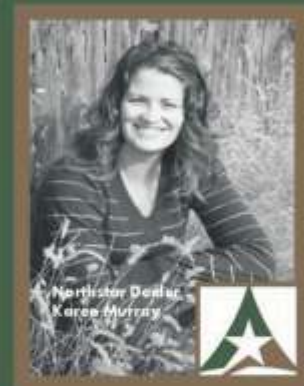
Ask about our
Custom Blends!

Meet the Unique Needs of Your Soil Types and Grower Requirements With Northstar Custom and Standard Blends

Custom Seed Blends designed to meet the forage requirements for your operation

- Great selection of proprietary varieties
- Reclamation seed
- Cover crop varieties
- Expert agronomic advice
- Personal, Friendly Service

Northstar Seed, working in partnership on your farm and ranch to improve production, and your bottom line.



Northstar Dealer:
Karen Murray
Ph: 403-952-9521
karencrop@gmail.com

www.northstarseed.com

Northstar Sales Agronomist:
Brian Palichuk
Call 1-403-878-7003
brianp@northstarseed.com



**Paternal Grand Sire
HOOVER NO DOUBT**



**Dam
PAHL 202E**



**Paternal Great Grand Dam
BALDRIDGE ISABEL Y69**



**Paternal Grand Dam
BALDRIDGE ISABEL B061**

PERFORMANCE	86	793	1400				
	BW	WW	YW	DOC	CW	MRB	REA
EPD'S	+1.9	+69	+116	+22	+50	+0.61	+0.54



PAHL BLACK BANDANA 193J 03-Apr-21

HOOVER NO DOUBT 1836419
BALDRIDGE PAPPY 2081058
 2223960 BALDRIDGE ISABEL B061 US18060653
 PAHL OPENING NIGHT 206A 1753178
PAHL LUCILLE 145Z 1859234
 PAHL QUEEN 107A 1734872



**Maternal Grand Dam
PAHL 236E**



**Sire
PAHL 130G**

PAHL 195J - Here is a heifers first calf that has done tremendously well. The Powerball genetics are a result of a flush of BSF Hot Lotto and an amazing cow from Musgrave Angus in Illinois. The Powerball bulls seem to carry a bit more frame but are still maintaining great depth and thickness. The 115G heifer is a daughter of Bruns Blaster who's performance and feed efficiency are tough to beat. His son's have topped our sale for years, now the daughters are at work producing bulls like this.

PERFORMANCE	86	732	1370				
	BW	WW	YW	DOC	CW	MRB	REA
EPD'S	+3.1	+69	+134	+23	+62	+0.23	+0.46



PAHL POWERBALL 195J 04-Apr-21

BSF HOT LOTTO 1401 1879579
PAHL POWERBALL 130G 2134038
 2214931 MCATL BLACKCAP 070-4132 1869634
 BRUNS BLASTER 1887308
PAHL 070 BLACKCAP 115G 2134010
 PAHL 070 BLACKCAP 236E 2000341



PAHL PAYWEIGHT 196J 04-Apr-21

P196J

BASIN PAYWEIGHT 1682 2010588
BROOKS PAYWEIGHT 6442 1986174
 2214933 RUBY 2466 BCBR US17320514
 REMINGTON PREDOMINANT 260T 1419091
ARDA BEAUTY 105A 1782165
 ARDA BEAUTY 184U 1594393

PERFORMANCE	88	780	1500				
	BW	WW	YW	DOC	CW	MRB	REA
EPD'S	+1.6	+60	+114	+11	+63	+0.45	+0.27



PAHL Livestock
P196J



PAHL NEXT STEP 197J 04-Apr-21

P197J

PRAIRIE PRIDE NEXT STEP 2036 US17367599
PRAIRIE PRIDE ORIGINAL 7005 2096128
 2214934 PRAIRIE PRIDE EILEEN 1032 US17767087
 ARDA CASH FLOW 63D 1941255
PAHL LADY HEATHER 177F 2054259
 PAHL LADY HEATHER 237C 1859361

PERFORMANCE	82	650	1280				
	BW	WW	YW	DOC	CW	MRB	REA
EPD'S	+1.5	+52	+102	+7	+46	+0.39	+0.45



PAHL Livestock
P197J



Dam
PAHL 177F



PAHL NEXT STEP 198J 04-Apr-21

P198J

PRAIRIE PRIDE NEXT STEP 2036 US17367599
PRAIRIE PRIDE ORIGINAL 7005 2096128
 2214936 PRAIRIE PRIDE EILEEN 1032 US17767087
 PEAK DOT IRON MOUNTAIN 457Y 1635217
PAHL 225E QUEEN 184A 1734941
 PAHL 225E QUEEN 234X 1563052

PERFORMANCE	92	669	1290				
	BW	WW	YW	DOC	CW	MRB	REA
EPD'S	+2.4	+53	+105	+13	+47	+0.48	+0.32



PAHL Livestock
P198J



PAHL NEXT STEP 200J 04-Apr-21

P200J

PRAIRIE PRIDE NEXT STEP 2036 US17367599
PRAIRIE PRIDE ORIGINAL 7005 2096128
 2214939 PRAIRIE PRIDE EILEEN 1032 US17767087
 PAHL DARE 2 DREAM 172T 1411631
PAHL ROSEBUD 105X 1562974
 CHICO ROSEBUD 6R 1255862

PERFORMANCE	92	840	1370				
	BW	WW	YW	DOC	CW	MRB	REA
EPD'S	+2.3	+46	+88	+8	+41	+0.47	+0.54



PAHL Livestock
P200J



Dam
PAHL 105X



Paternal Grand Sire
BSF HOT LOTTO



Dam
PAHL 104G

PAHL 202J - Another heifers first calf, from the Powerball 30G herd sire. These cattle will really get out and work for anyone. As this one is full of home raised genetics, there is nothing better than cattle raised in Southern Alberta to work best in Southern Alberta. 202J is a bull with great length, depth and has a nice foot. The Grand dam 110B is the mother to lot 105J who's son last year went to M & R Damen, so the longevity is there as well.

PERFORMANCE	84	752	1420				
	BW	WW	YW	DOC	CW	MRB	REA
EPD'S	+3.0	+69	+131	+24	+66	+0.63	+0.54



PAHL
LIVESTOCK
P202J

PAHL POWERBALL 202J 05-Apr-21

BSF HOT LOTTO 1401 1879579
PAHL POWERBALL 130G 2134038
 2215689 MCATL BLACKCAP 070-4132 1869634
 PAHL SOLAR ECLIPSE 157Z 1706198
PAHL LOOKER 104G 2106730
 PAHL LOOKER 110B 1812834



PAHL POWERBALL 206J 06-Apr-21

P206J

BSF HOT LOTTO 1401 1879579
PAHL POWERBALL 130G 2134038
 2215692 MCATL BLACKCAP 070-4132 1869634
 ARDA CASH FLOW 63D 1941255
PAHL FLORA 112G 2106747
 PAHL FLORA 132Z 1684649

PERFORMANCE	84	720	1270				
	BW	WW	YW	DOC	CW	MRB	REA
EPD'S	+2.3	+76	+134	+19	+62	+0.04	+0.69



PAHL
LIVESTOCK
P206J



PAHL POWERBALL 216J 12-Apr-21

P216J

BSF HOT LOTTO 1401 1879579
PAHL POWERBALL 130G 2134038
 2215702 MCATL BLACKCAP 070-4132 1869634
 PRAIRIE PRIDE ORIGINAL 7005 2096128
PAHL LADY HEATHER 132G 2117389
 PAHL LADY HEATHER 237C 1859361

PERFORMANCE	90	580	1260				
	BW	WW	YW	DOC	CW	MRB	REA
EPD'S	+3.4	+61	+119	+10	+55	+0.29	+0.55



PAHL
LIVESTOCK
P216J



BOSS FEEDS



- Protein Tubs
- Stress Tubs
- Mineral Tub
- Calving Breeder
- Equine Tub

CW Livestock Supply

Brian & Rosanne Palichuk

403.548.0954



Setting Industry Standards in
Sales Parts Service & Rentals





PAHL CASH 225J 15-Apr-21

P225J

KR CASH FLOW 1788448
ARDA CASH FLOW 63D 1941255
 2215710 ARDA BEAUTY 184U 1594393
 BELVIN WARRIOR 6'09 1497960
PAHL JANE 160Z 1684672
 CHICO JANE 37S 1315783

PERFORMANCE	90	710	1340				
	BW	WW	YW	DOC	CW	MRB	REA
EPD'S	+3.1	+54	+104	+26	+51	+0.26	+0.55



Maternal Brother
178H to East &
West Ranch



P225J



PAHL NEXT STEP 227J 16-Apr-21

P227J

PRAIRIE PRIDE NEXT STEP 2036 US17367599
PRAIRIE PRIDE ORIGINAL 7005 2096128
 2215712 PRAIRIE PRIDE EILEEN 1032 US17767087
 ARDA CASH FLOW 63D 1941255
PAHL GEORGINA 197F 2054276
 PAHL GEORGINA 223A 1734970

PERFORMANCE	88	695	1340				
	BW	WW	YW	DOC	CW	MRB	REA
EPD'S	+4.9	+79	+143	+23	+75	+0.50	+0.49



P227J

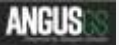


PAHL NEXT STEP 228J 17-Apr-21

P228J

PRAIRIE PRIDE NEXT STEP 2036 US17367599
PRAIRIE PRIDE ORIGINAL 7005 2096128
 2215713 PRAIRIE PRIDE EILEEN 1032 US17767087
 PEAK DOT IRON MOUNTAIN 457Y 1635217
PAHL NEONIA 120C 1859254
 PAHL NEONIA 115Z 1684640

PERFORMANCE	82	660	1230				
	BW	WW	YW	DOC	CW	MRB	REA
EPD'S	-0.6	+53	+93	+9	+35	+0.36	+0.24



Maternal Brother
199H to Lazy H Ranch



P228J



PAHL POWERBALL 230J 17-Apr-21

P230J

BSF HOT LOTTO 1401 1879579
PAHL POWERBALL 157F 2071692
 2215715 MCATL BLACKCAP 070-4132 1869634
 BRUNS BLASTER 1887308
PAHL ROSETTA 132F 2054224
 PAHL ROSETTA 181A 1734939

PERFORMANCE	88	670	1290				
	BW	WW	YW	DOC	CW	MRB	REA
EPD'S	+2.5	+78	+138	+23	+72	+0.27	+0.30



P230J



PAHL POWERBALL 236J 18-Apr-21

P236J

BSF HOT LOTTO 1401 1879579

PAHL POWERBALL 157F 2071692

2215721

MCATL BLACKCAP 070-4132 1869634

PEAK DOT IRON MOUNTAIN 457Y 1635217

PAHL EMPRESS 180B 1812817

PAHL 2466 EMPRESS 145Y 1611506

PERFORMANCE	90	683	1250				
	BW	WW	YW	DOC	CW	MRB	REA
EPD'S	+2.8	+56	+87	+12	+44	-0.26	+0.45



PAHL POWERBALL 237J 18-Apr-21

P237J

BSF HOT LOTTO 1401 1879579

PAHL POWERBALL 157F 2071692

2215722

MCATL BLACKCAP 070-4132 1869634

PAHL OPENING NIGHT 206A 1753178

PAHL GEORGINA 217E 1992407

PAHL GEORGINA 223A 1734970

PERFORMANCE	88	705	1420				
	BW	WW	YW	DOC	CW	MRB	REA
EPD'S	+3.2	+76	+136	+27	+57	+0.48	+0.37



Paternal Grand Sire
FV KING 308M



Dam
PRINCESS 213Z



Maternal Brother
238F to Ost Cattle



Maternal Brother
154G Retailed PB Herd Bull

PAHL POWERBALL 238J 20-Apr-21

BSF HOT LOTTO 1401 1879579

PAHL POWERBALL 157F 2071692

2215723

MCATL BLACKCAP 070-4132 1869634

F V 308M KING 445T 1410945

RANCHERS CHOICE PRINCESS 213Z 1658804

SASKALTA PRINCESS 486T 1433465

PERFORMANCE	92	700	1350				
	BW	WW	YW	DOC	CW	MRB	REA
EPD'S	+5.9	+67	+116	+25	+54	+0.04	+0.52



PAHL 238J - Here's a thick, rugged son from the Powerball sire. The Powerball/Hot Lotto group of bulls is a group that will grab your attention. They are long spined and carry great natural thickness. The Princess 213Z cow is all brood cow. She has as close to perfect feet and udder as you can find. So much so that her son last year Big Shot 154G who unfortunately got just a touch lame before last years sale ended up staying here as a new purebred herd sire for us. She's also has a son working at Ost Cattle Co.



PAHL POWERBALL 240J 21-Apr-21

P240J

BSF HOT LOTTO 1401 1879579
PAHL POWERBALL 130G 2134038
 2215725 MCATL BLACKCAP 070-4132 1869634
 ARDA CASH FLOW 63D 1941255
PAHL FAIRLASS 161G 2117411
 PAHL FAIRLASS 234Z 1684739

PERFORMANCE	76	630	1240				
	BW	WW	YW	DOC	CW	MRB	REA
EPD'S	+3.0	+68	+128	+19	+71	+0.22	+0.72

ANGUS



PAHL
LIVESTOCK
P240J



PAHL POWERBALL 242J 23-Apr-21

P242J

BSF HOT LOTTO 1401 1879579
PAHL POWERBALL 157F 2071692
 2215727 MCATL BLACKCAP 070-4132 1869634
 BRUNS BLASTER 1887308
PAHL 2466 EMPRESS 124E 1992326
 PAHL 2466 EMPRESS 127W 1518646

PERFORMANCE	82	680	1300				
	BW	WW	YW	DOC	CW	MRB	REA
EPD'S	+0.6	+61	+112	+20	+56	+0.11	+0.43

ANGUS



PAHL
LIVESTOCK
P242J



PAHL CASH 244J 28-Apr-21

P244J

KR CASH FLOW 1788448
ARDA CASH FLOW 63D 1941255
 2215729 ARDA BEAUTY 184U 1594393
 BELVIN WARRIOR 6'09 1497960
PAHL MISS INA 216B 1812769
 PAHL MISS INA 185U 1460975

PERFORMANCE	88	645	1280				
	BW	WW	YW	DOC	CW	MRB	REA
EPD'S	+2.8	+51	+100	+19	+45	+0.39	+0.49

ANGUS

Maternal Brother
208H to M&R Damen



PAHL
LIVESTOCK
P244J



PAHL POWERBALL 245J 28-Apr-21

P245J

BSF HOT LOTTO 1401 1879579
PAHL POWERBALL 130G 2134038
 2215730 MCATL BLACKCAP 070-4132 1869634
 HF WEISER 25C 1843965
PAHL TIBBIE 142G 1684730
 PAHL TIBBIE 227Z 1684730

PERFORMANCE	84	600	1160				
	BW	WW	YW	DOC	CW	MRB	REA
EPD'S	+3.7	+66	+117	+15	+45	+0.15	+0.02

ANGUS



PAHL
LIVESTOCK
P245J

Hereford Long Yearlings

This is the top 21 bulls out of the group that started with 29. None are being kept and none have been sold. They have been vigorously culled for feet, testicles, temperament, structure and performance over the past 18 months. We are very proud of the group we have assembled and know that you will be able to buy with the utmost of confidence.



P5J

BW ... +3.2
 WW ... 52.6
 YW ... 84.3
 MILK ... 33.1
 T. MAT ... 59.4
 CE. ... +5.9

PAHL 12D JACKKNIFE 5J 21-Mar-21

CHURCHILL SENSATION 028X {DLF HYF IEF MDF}
PAHL 028X DAKAR 12D {DLF HYF IEF}
 XTC 79Y MISS ERICA 158B
 03090824 SNS 40W WESTERN LAD 63B {DLF HYF IEF MSUDF}
PAHL 63B FAITH 2F
 PAHL 105 AGNES 6A

BW: 90 WW: 640 YW: 1137 ADJ

Jackknife is a red necked, red eyed meat machine. He is wide topped with a big hind end. His mom 2F is really starting to come into her own.



5J



P8J

BW ... +3.9
 WW ... 50.0
 YW ... 79.4
 MILK ... 18.4
 T. MAT ... 43.4
 CE. ... +5.8

PAHL 9G JOLT 8J 22-Mar-21

LRD 23B EASY LAD 38E {DLF HYF IEF}
PAHL 38E GMC 9G {DLF HYF IEF MSUDF}
 LRD EASY LADY 41E
 03090825 C 0132X TOTAL ADVANCE 213C {DLF HYF IEF}
PAHL 213C GAIL 21G
 PAHL 207T JESSICA 13Z

BW: 88 WW: 620 YW: 1128 ADJ

A real good bull out of a first calf heifer. Jolt has a little feather neck with tremendous depth & thickness. He brings a nice moderate 88lb BW to the table as well.



8J



P9J

BW ... +3.2
 WW ... 48.5
 YW ... 74.6
 MILK ... 28.1
 T. MAT ... 52.4
 CE. ... +1.4

PAHL 20E JACKPOT 9J 23-Mar-21

BR 9279 EXTRA DEEP 15Z {DLF HYF IEF}
ILK EXTRA MONEY ET 20E {DLF HYF IEF}
 03090826 WB KATIE MONEY 28Z {DLF HYF IEF MSUDF}
 PAHL 028X DAKAR 12D {DLF HYF IEF}
PAHL 12D FALLON 3F
 PAHL 37W DEE 49D

BW: 76 WW: 625 YW: 1072 ADJ

A set of Extra Money twins that are both real good! Jackpot is solid marked with pigment on both eyes.



9J



P10J

BW ... +3.2
 WW ... 48.5
 YW ... 74.6
 MILK ... 28.1
 T. MAT ... 52.4
 CE. ... +1.4

PAHL 20E JOURNEY 10J 23-Mar-21

BR 9279 EXTRA DEEP 15Z {DLF HYF IEF}
ILK EXTRA MONEY ET 20E {DLF HYF IEF}
 03090827 WB KATIE MONEY 28Z {DLF HYF IEF MSUDF}
 PAHL 028X DAKAR 12D {DLF HYF IEF}
PAHL 12D FALLON 3F
 PAHL 37W DEE 49D

BW: 76 WW: 630 YW: 1057 ADJ

Journey is goggle eyed with great length & depth. Both these bulls will do some good things.



10J

Hereford Long Yearlings



P12J

BW +4.3
 WW 52.8
 YW 86.1
 MILK ... 31.4
 T. MAT. 57.8
 CE. +5.8

PAHL 12D JURASSIC 12J 23-Mar-21

CHURCHILL SENSATION 028X {DLF HYF IEF MDF}
PAHL 028X DAKAR 12D {DLF HYF IEF}
 03090828 XTC 79Y MISS ERICA 158B
 SNS 5S STANMORE 79Y {DLF HYF IEF MSUDF}
XTC 79Y MISS ERICA 158B
 BBSF 114L SILVER LASS 235X

BW: 76 WW: 630 YW: 1057 ADJ

Jurassic has pigment on both eyes with a real wide top. He is red necked with a little feather on top. 158B has a son at Guentner's and is also the mother of Reference Sire Dakar 12D.



12J

PAHL 158B
 Dam of 12J



15J



P15J

BW +3.8
 WW 44.7
 YW 74.7
 MILK ... 25.1
 T. MAT. 47.5
 CE. +1.6

PAHL 20E JUNO 15J 24-Mar-21

BR 9279 EXTRA DEEP 15Z {DLF HYF IEF}
ILK EXTRA MONEY ET 20E {DLF HYF IEF}
 03090829 WB KATIE MONEY 28Z {DLF HYF IEF MSUDF}
 PAHL 37W ARCHER 19A {DLF HYF IEF MSUDF}
XTC 19A MOMMA BEAR 102D
 XTC 109Y MOMMA BEAR 121A

BW: 96 WW: 655 YW: 1099 ADJ

Juno is a top Extra Money son out of a real good XTC bred cow. He has goggle eyes and has tremendous length & thickness. 102D has a son at Sunset Colony.



If Standing Up
 For Yourself
 Burns A
 Bridge
 Have Matches
 We Ride
 At Dawn

Hereford Long Yearlings



P17J

BW . . . +4.4
 WW . . . 52.1
 YW . . . 78.7
 MILK . . 27.2
 T. MAT. . 53.3
 CE. . . . +3.4

PAHL 12D JUSTICE 17J 24-Mar-21

CHURCHILL SENSATION 028X {DLF HYF IEF MDF}
PAHL 028X DAKAR 12D {DLF HYF IEF}
 03090830 XTC 79Y MISS ERICA 158B
 DDA 24U YAHOO 3Y {DLF HYF IEF}
C 3Y MISS YAHOO 134B
 DUNROBIN ECLIPSE 42N
BW: 96 WW: 665 YW: 1079 ADJ

A real good Dakar son out of an old Corbiell bred cow. Justice has pigment on both eyes with a wide, long top.



17J



P18J

BW . . . +3.0
 WW . . . 42.9
 YW . . . 69.1
 MILK . . 21.4
 T. MAT. . 42.9
 CE. . . . +2.2

PAHL 20E JUKEBOX 18J 24-Mar-21

BR 9279 EXTRA DEEP 15Z {DLF HYF IEF}
ILK EXTRA MONEY ET 20E {DLF HYF IEF}
 03090831 WB KATIE MONEY 28Z {DLF HYF IEF MSUDF}
 FE 1S ROYAL STANDARD 37W {DLF HYF IEF}
PAHL 37W CELINE 4C {DLF HYF IEF}
 PAHL 3S PAGE 12U

BW: 92 WW: 610 YW: 1032 ADJ

Another good Easy Money son out of a great cow. Big goggle eyes and lots of eye appeal here! 4C has sons working at Ross Ranches and the Dubeau Ranch as well as our high selling female at last years sale going to XTC.



PAHL 4C
 Dam of PAHL 18J



18J



P20J

BW . . . +3.6
 WW . . . 49.1
 YW . . . 79.7
 MILK . . 18.4
 T. MAT. . 43.0
 CE. . . . +2.9

PAHL 9G JESTER 20J 25-Mar-21

LRD 23B EASY LAD 38E {DLF HYF IEF}
PAHL 38E GMC 9G {DLF HYF IEF MSUDF}
 03090832 LRD EASY LADY 41E
 SGC 334A STANMORE LAD 118D {DLF HYF IEF}
PAHL 118D GAY 50G
 PAHL 37W ATHENA 14A

BW: 86 WW: 585 YW: 1086 ADJ

50G did a great job on her first try! Jester is solid marked with a big butt end and one big goggle eye. We thought a lot of Jester so I threw him out with a few of our purebred heifers.



20J



P22J

BW . . . +2.7
 WW . . . 48.7
 YW . . . 77.4
 MILK . . 32.4
 T. MAT. . 56.8
 CE. . . . +4.8

PAHL 12D JUDGE 22J 25-Mar-21

CHURCHILL SENSATION 028X {DLF HYF IEF MDF}
PAHL 028X DAKAR 12 D {DLF HYF IEF}
 03090833 XTC 79Y MISS ERICA 158B
 F REST EASY 105 {DLF HYF IEF}
PAHL 105 CORRINE 53C {DLF HYF IEF}
 DUNROBIN FANCY 57U

BW: 94 WW: 695 YW: 1065 ADJ

A goggle eyed, solid marked rascal here. Judge has lots of good things in his make up including a real top producing momma. 53C's son went to Mike & Kim Ost in 2020.



PAHL 53C
 Dam of 22J 34



22J

Hereford Long Yearlings



24J

PAHL 31E
Dam of 24J



26J

PAHL 1D
Dam of 26J



P24J

BW +3.8
WW 47.1
YW 71.3
MILK . . . 21.1
T. MAT. . . 44.7
CE. . . . +1.8

PAHL 20E JUPITER 24J 26-Mar-21

BR 9279 EXTRA DEEP 15Z {DLF HYF IEF}
ILK EXTRA MONEY ET 20E {DLF HYF IEF}
03090834 WB KATIE MONEY 28Z {DLF HYF IEF MSUDF}
SNS 40W WESTERN LAD 63B {DLF HYF IEF MSUDF}
PAHL 63B EMILY 31E
PAHL 207T TONI 34Z
BW: 92 WW: 590 YW: 1071 ADJ

Have a good look here, Jupiter is a good one! 1/2 brother working at Dusty Wind Ranch in 20' and a full brother going to Herman Land and Cattle last year.



P26J

BW +3.6
WW 54.9
YW 83.1
MILK . . . 32.5
T. MAT. . . 60.0
CE. . . . +4.5

PAHL 12D JAVA 26J 28-Mar-21

CHURCHILL SENSATION 028X {DLF HYF IEF MDF}
PAHL 028X DAKAR 12D {DLF HYF IEF}
03090835 XTC 79Y MISS ERICA 158B
T-BAR-K 902W HOMERUN 3A {DLF HYF IEF}
PAHL 3A DORA 1D
BBSF 39T TAPIOCA 247B
BW: 94 WW: 645 YW: 1089 ADJ

Java is a thick, clean made Dakar son. He has pigment and a small feather neck. His mom also has a son working at Ross Ranches.

For more information or to apply for
Agri Readline, Contact:

BUSINESS BANKING

Agri ReadLine



Steve Pahl, BA PFP
Senior Relationship Manager
Business &
Agricultural
Banking

Canadian Business Banking
101 Carry Drive SE
Medicine Hat, Alberta T1B 3M6

Tel: 403-529-8552
Fax: 403-525-2706
stephen.pahl@bmo.com



To handle all
of your farm
borrowing needs.

¹ Some conditions apply. See your branch for details.
² Subject to meeting Bank of Montreal's usual credit granting criteria.
³ Fixed rate portions only.
⁴ Registered trade-mark of Bank of Montreal

Hereford Long Yearlings



29J



32J



PAHL 12E
Dam of 32J



P29J

BW +5.1
WW 51.5
YW 82.1
MILK . . . 18.5
T. MAT. . . 44.3
CE. +3.7

PAHL 9G JAKARTA 29J 30-Mar-21

LRD 23B EASY LAD 38E {DLF HYF IEF}
PAHL 38E GMC 9G {DLF HYF IEF MSUDF}
03090836 LRD EASY LADY 41E
SNS 40W WESTERN LAD 63B {DLF HYF IEF MSUDF}
PAHL 63B GINA 1G
PAHL 207T WILLOW 44Z

BW: 94 WW: 560 YW: 1133 ADJ

29J is a real sale feature! Pigment on both eyes and a real deep body. A very impressive bull out of a first calf heifer.



P32J

BW +3.8
WW 51.7
YW 84.7
MILK . . . 28.4
T. MAT. . . 54.3
CE. +6.2

PAHL 12D JET 32J 01-Apr-21

CHURCHILL SENSATION 028X {DLF HYF IEF MDF}
PAHL 028X DAKAR 12D {DLF HYF IEF}
03090837 XTC 79Y MISS ERICA 158B
SNS 40W WESTERN LAD 63B {DLF HYF IEF MSUDF}
PAHL 63B EILEEN 12E
PAHL 207T JESSICA 13Z

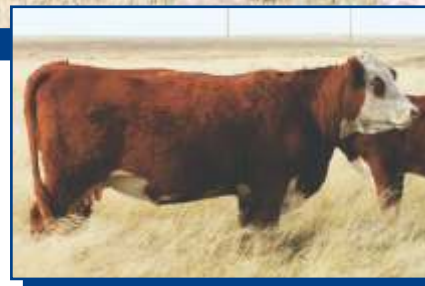
BW: 92 WW: 670 YW: 1097 ADJ

Jet is big bodied with a big butt and a wide top. He was in the top 5 at weaning time so you can expect some extra pounds on those calves. 12E's son went to Elkwater Farming last year.

Hereford Long Yearlings



34J



PAHL 305E
Dam of 34J



33J



PAHL 9G JEFFERSON 33J 01-Apr-21

P33J

BW +5.4
WW 55.3
YW 89.2
MILK . . . 20.9
T. MAT. . . 48.6
CE. +2.9

LRD 23B EASY LAD 38E {DLF HYF IEF}
PAHL 38E GMC 9G {DLF HYF IEF MSUDF}
03090838 LRD EASY LADY 41E
SGC 334A STANMORE LAD 118D {DLF HYF IEF}
PAHL 118D GWEN 33G
PAHL 63B ERICA 45E

BW: 94 WW: 610 YW: 1179 ADJ

Another real good bull out of a first calver; GMC really bred well for us. Red eyes, solid marked with a long, deep body to boot.



PAHL 12D JAGUAR 34J 02-Apr-21

P34J

BW +4.9
WW 55.5
YW 90.9
MILK . . . 31.3
T. MAT. . . 59.1
CE. +1.3

CHURCHILL SENSATION 028X {DLF HYF IEF MDF}
PAHL 028X DAKAR 12D {DLF HYF IEF}
03090839 XTC 79Y MISS ERICA 158B
SNS 40W WESTERN LAD 56B {DLF HYF IEF MSUDF}
BBSF 56B STELLA 305E
HOLLOW 868Y STELLA 82B

BW: 98 WW: 705 YW: 1213 ADJ

Jaguar is a good one. Thick, deep and wide. He was ranked 3rd at weaning and 1st as a yearling. Pipeline Grazing purchased 305E's son in last years sale.

Hereford Long Yearlings



35J



PAHL 14B
Dam of 35J



40J



PAHL 20E JUNIOR 35J 04-Apr-21

P35J

BW +2.5
WW 40.1
YW 66.5
MILK . . . 23.0
T. MAT. . 43.1
CE. . . . +2.9

BR 9279 EXTRA DEEP 15Z {DLF HYF IEF}
ILK EXTRA MONEY ET 20E {DLF HYF IEF}
03090836 WB KATIE MONEY 28Z {DLF HYF IEF MSUDF}
FE 1S ROYAL STANDARD 37W {DLF HYF IEF}
PAHL 37W BECKY 14B
DUNROBIN SHERI 8U

BW: 86 WW: 700 YW: 1172 ADJ

Junior could be a real herd bull by sale day. He is marked and put together perfect! He was also ranked 4th at both weaning and yearling time. 14B had one of our high selling bulls in 2019 going to SNS Herefords and another top bull going to the Circle Cross ranch in 2020.



PAHL 20E JAG 40J 06-Apr-21

P40J

BW +3.9
WW 47.3
YW 77.9
MILK . . . 22.6
T. MAT. . 46.3
CE. . . . +3.7

BR 9279 EXTRA DEEP 15Z {DLF HYF IEF}
ILK EXTRA MONEY ET 20E {DLF HYF IEF}
03090841 WB KATIE MONEY 28Z {DLF HYF IEF MSUDF}
MVF 219T STD TURIN LAD 81Y {DLF HYF IEF}
PAHL 81Y FIONA 72F
LCI 311W TOTAL LADY 290A

BW: 88 WW: 580 YW: 1093 ADJ

Jag is the one that always catches your eye when you're in the bull pen. Red eyed and real stylish, you won't miss him sale day.

Hereford Long Yearlings



49J



47J



PAHL 61C
Dam of 47J



PAHL 12D JACKSON 47J 10-Apr-21

P47J

BW +3.1
WW 51.2
YW 82.5
MILK ... 32.5
T. MAT. . 58.1
CE. +5.7

CHURCHILL SENSATION 028X {DLF HYF IEF MDF}
PAHL 028X DAKAR 12D {DLF HYF IEF}
03090842 XTC 79Y MISS ERICA 158B
F REST EASY 105 {DLF HYF IEF}
PAHL 105 CORA 61C
PAHL 145 SALENA 15S {DLF HYF IEF}

BW: 96 WW: 595 YW: 1081 ADJ

A solid made Dakar son with a feather neck and pigmented eyes. 61C had one of our top sellers in last years sale going to Clint and Daryl Brost.



PAHL 20E JUNCTION 49J 17-Apr-21

P49J

BW +3.9
WW 46.2
YW 71.6
MILK ... 22.2
T. MAT. . 45.3
CE. +1.5

BR 9279 EXTRA DEEP 15Z {DLF HYF IEF}
ILK EXTRA MONEY ET 20E {DLF HYF IEF}
03090843 WB KATIE MONEY 28Z {DLF HYF IEF MSUDF}
SNS 40W WESTERN LAD 63B {DLF HYF IEF MSUDF}
PAHL 63B FLORA 47F
MVF 106X STD VOLT LASS 126B

BW: 90 WW: 675 YW: 1206 ADJ

One of the youngest and one of the best in the offering. Junction has big goggle eyes with a table top for a back. He was ranked #1 as a calf and #2 as a yearling. Have a look here!

Hereford Long Yearlings



50J



PAHL 49D
Dam of 50J



P50J

BW +3.2
WW 47.0
YW 72.5
MILK ... 25.2
T. MAT. . 48.7
CE. +1.9

PAHL 20E JINX 50J 19-Apr-21

BR 9279 EXTRA DEEP 15Z {DLF HYF IEF}
ILK EXTRA MONEY ET 20E {DLF HYF IEF}
03090844 WB KATIE MONEY 28Z {DLF HYF IEF MSUDF}
FE 1S ROYAL STANDARD 37W {DLF HYF IEF}

PAHL 37W DEE 49D
PAHL 105 AINSLEY 24A

BW: 94 WW: 685 YW: 1168 ADJ

The youngest in the sale. Jinx is as long as a truck and marked perfect. Ranked 2nd at weaning and 5th as a yearling. 49D's son went to Circle Cross at last years sale.

SEEK TO BE
WORTH KNOWING
RATHER THAN BE
WELL KNOWN.

Prime Printing

We are your
NUMBER ONE
Professional Print Company

Contact us for a Quote

Phone: 403 526 8446

Fax: 403 528 2576

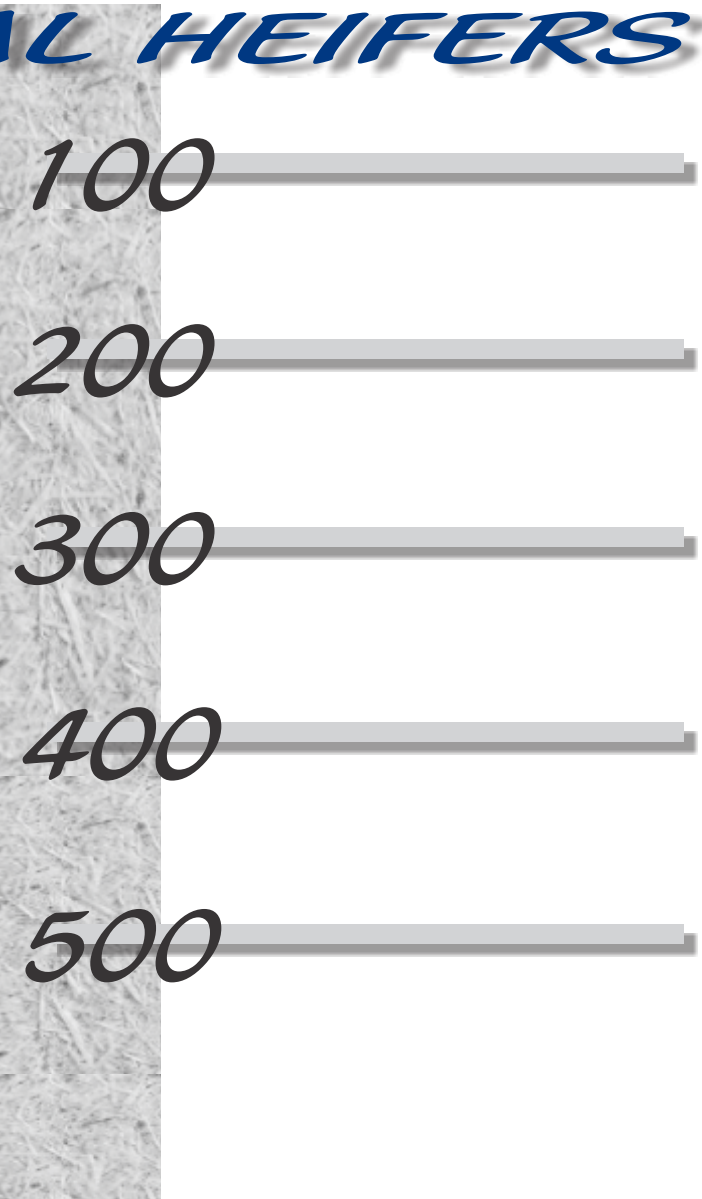
570 - 18th Street S.W.
Medicine Hat, AB T1A 8A7
E-mail: primep@shaw.ca
www.primeprinting.ca

COMMERCIAL HEIFERS



First and second cross Angus/Hereford heifers. We don't keep any of these so they are our best. All replacement heifers receive 3 shots Bovi Shield 1 shot Plus Enforce from birth to breeding as well as Ivomeced. Bred July 4 - July 26 (one cycle) to easy calving Black Angus bulls. Preg. checked safe in calf.

Preview of Offering



Proud to Support Our Community



Brandon Hoefman



Bradford Cummings



Sandy MacDonald



Dean McLeod



Barry Hagemester



Barry Finnimore



Jody Knipstrom

403-527-4406
www.bigmford.com



Stacey Jans



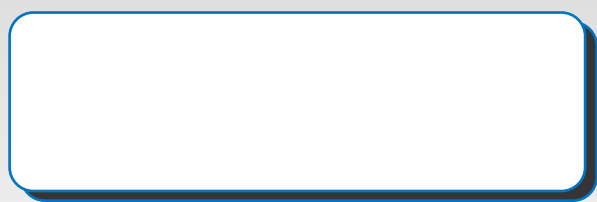
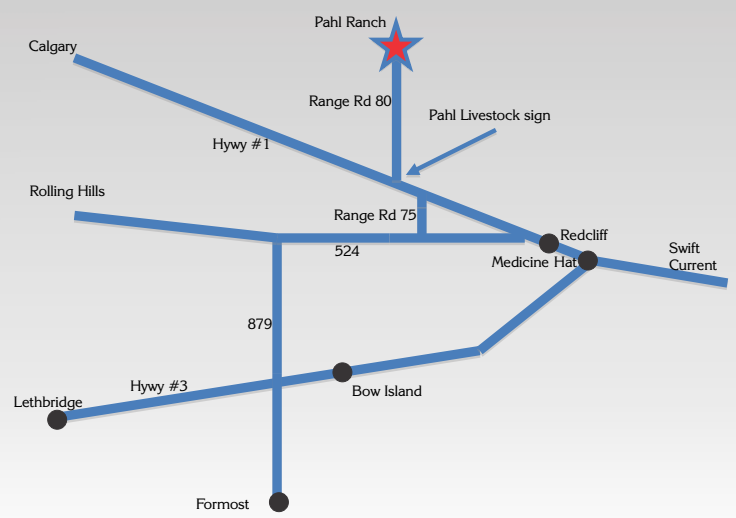
Cole Miller

RETURN TO:
PAHL LIVESTOCK
Box 245
Medicine Hat, Alberta
T1A 7E9

CANADA		POSTES
POST		CANADA
	Postage paid Personalized Mail	Port payé Courrier personnalisé
4152794		
RETURN POSTAGE GUARANTEED PORT DE RETOUR GARANTI		



FRIDAY, NOVEMBER 18, 2022



DATED MATERIAL
PRIME PRINTING (1995) LTD.